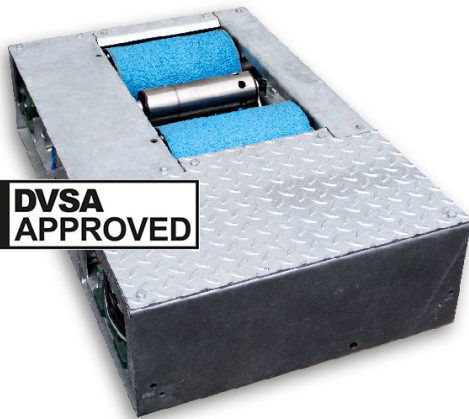


**CAP9410**

Brake tester for motorbike



**Capelec**<sup>®</sup>  
Ergonomics Efficiency Simplicity



✓ **DVSA  
APPROVED**



## CLASS 1 & CLASS 2

**MOT roller brake tester for  
motorbikes**

**Two wheelers : scooter, motorbike**

- Totem with PC box OS WIN
- 22-27" touch screen and remote control
- Compact
- Exit assistance
- Epoxy rollers
- Weight sensor
- Software S9400
- Galvanised steel frame
- Remote maintenance: update and remote control
- Option : security (rails, light, clamps)

Made in France



## CHASSIS

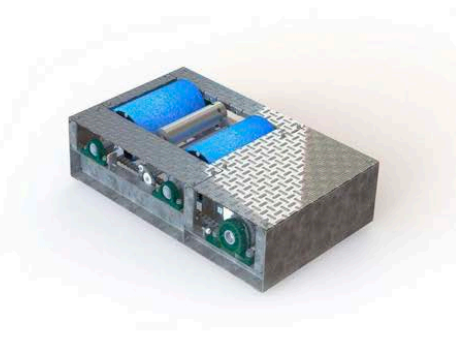
- Floor level rollers
- Diagnostic capability
- Built-in weighing system
- Exit assistance
- Wheel lock detection
- Compact galvanised steel chassis
- Heavy duty roller coating
- Optimal roller spacing
- Speed adapted to notched tyres

## INTERFACE

- Compact totem
- PC box OS WIN secured
- Software WIN9400
- Safety: emergency and power switch
- Start alert

## SPECIFICATIONS

- Maximum axle load **1 000 kg**
- Motors **2,5 kW**
- Maximum braking force **3 KN**
- Weighing system **3 points**
- Accuracy **± 2% of the range**
- Test speed **5,3 Km/h**
- Roller diameter **206 mm**
- Roller width **300 mm**
- Roller speed **80 mm**
- Distance between rollers **398 mm**
- Rollers **Long life epoxy**
- Size **620 x 1 020 x 260 mm**
- Weight **120 Kg**
- Power supply **400V tri + earthing 50 Hz**
- Corrosion protection **Galvanized**



For more information  
[www.capelec.com](http://www.capelec.com)